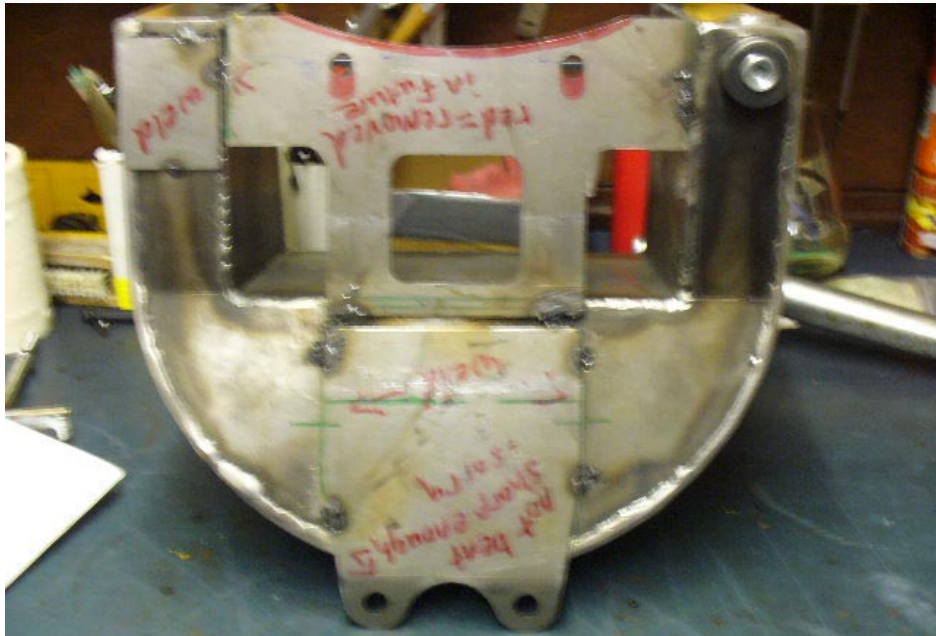


# RIGHT SIDE ELECTRIC START

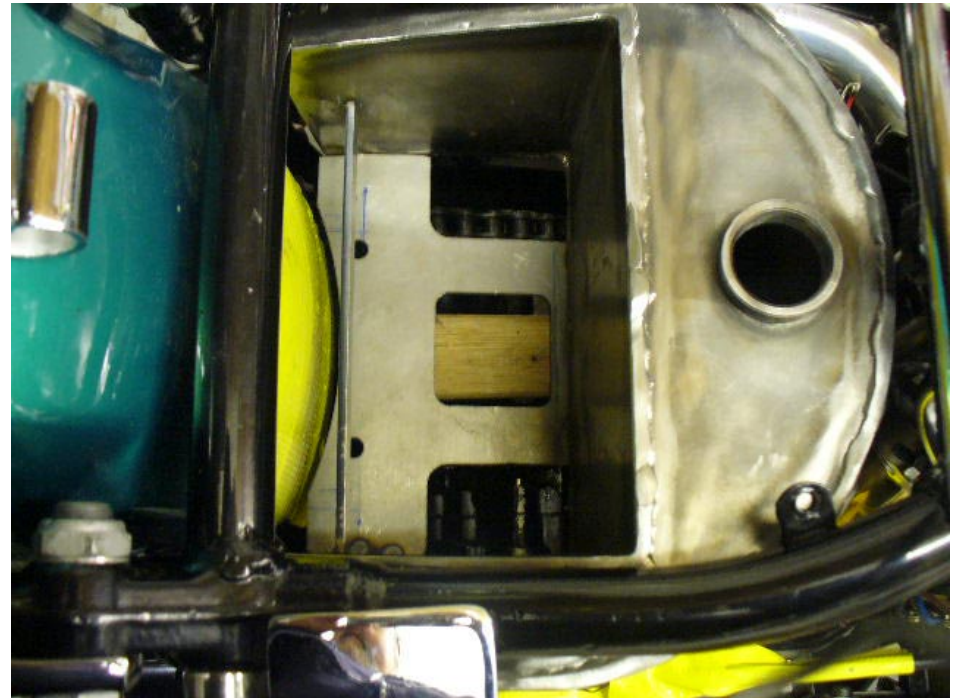
TANK Mk. 3



Blurred pic but only to show that I cut base plate in half as it makes it easier to bend and fit.



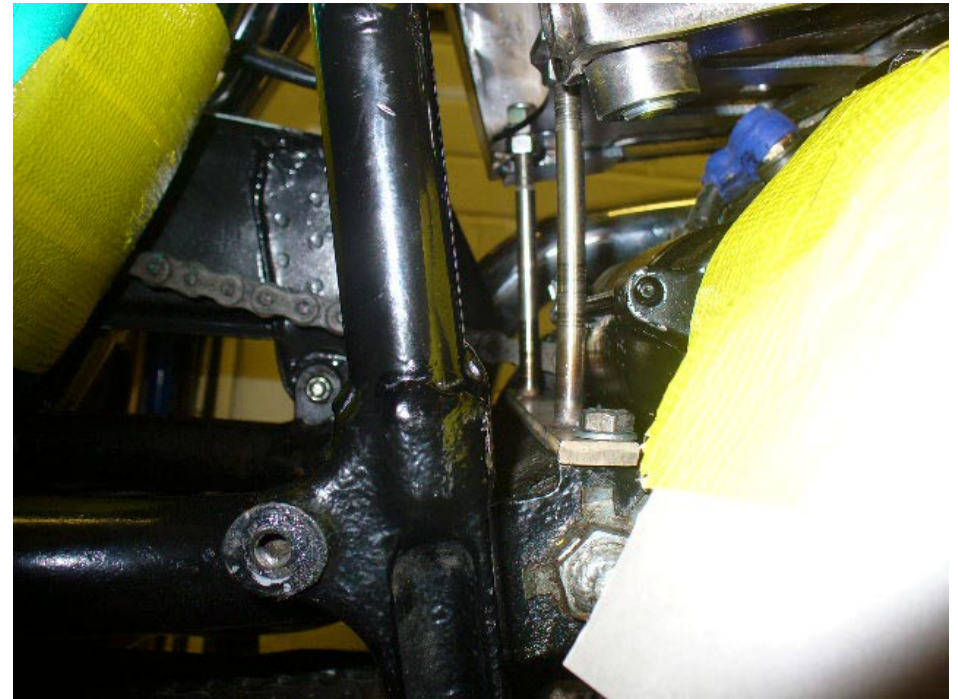
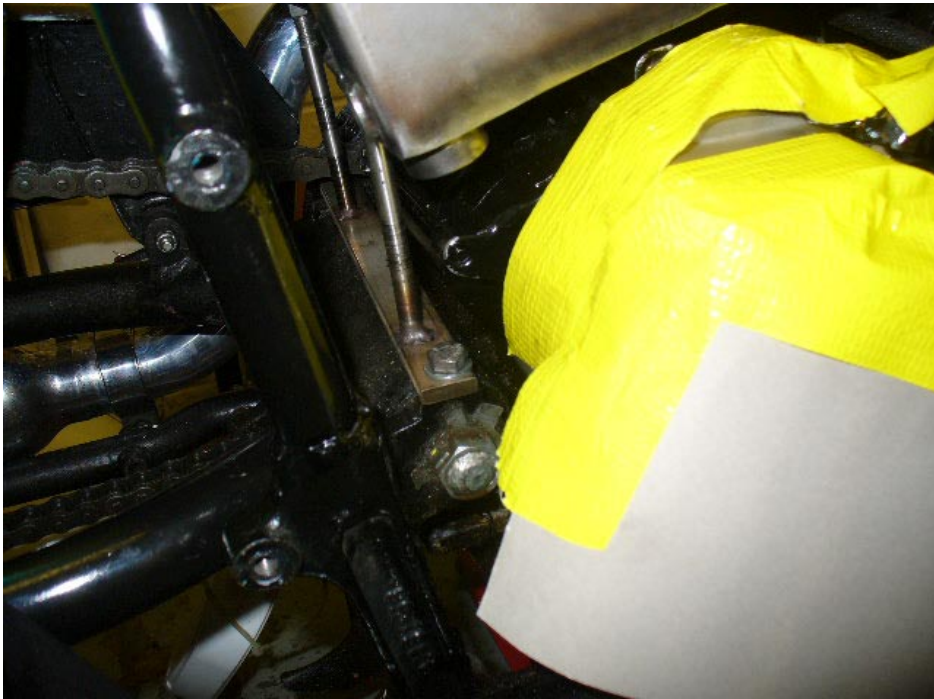
What would an old bodger like me do without good old plastacine?



Great fit to fender.



Mount in and bolted up.



More views of mount in place



Nice fit around fender and plenty of clearance for electrics.



Plenty of room for battery, get anothe half inch on depth or just give it airspace.